



# T-WATCH PRO

## T1 CPE MANAGEMENT SOFTWARE FOR WINDOWS®

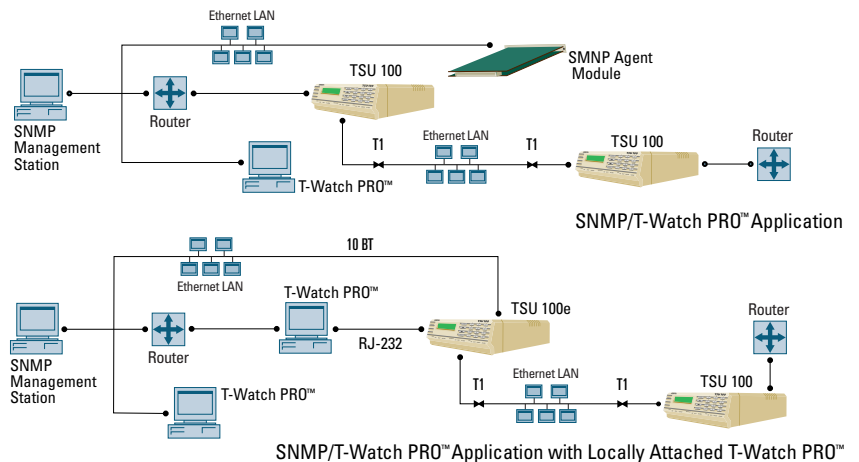
### PRODUCT FEATURES

- Graphical or numeric performance reports
- Support for all T1 CPE products from ADTRAN®
- Integrated Telnet client for managing ATLAS 800
- Local and remote network/DTE tests easily invoked
- Access to historical alarm events
- Simplified bandwidth assignment
- Local, 8k data inband, FDL or modem connection to TSU devices
- LAN access to SNMP Agent Module or 'e' series
- Automatic performance polling
- Full Help files
- On-line manual

ADTRAN® T-Watch PRO™ is a PC-based management software package for the TSU series of T1/FT1 DSU/CSUs, T1 CSU products and the ATLAS 800 system. T-Watch PRO allows the user to configure multiple T1 CPE devices from a single central control point, including the T1 network interface and all module data terminal equipment (DTE) interface parameters. Through comprehensive network monitor functions, T-Watch PRO automatically collects alarm conditions and unit status information from any remotely located TSUs. While performance data may be obtained manually from each TSU, automatic performance monitoring allows each unit to be polled daily for performance information at a user-specified time. T-Watch PRO also allows the user to retrieve the current status and performance data at any time. The performance measurement, stored as files by T-Watch PRO, can be used to create tabular and graphical reports which aid in tracking T1/FT1 network performance.

T-Watch PRO can be used to enhance management of TSU products in SNMP-managed networks. The software can send management commands across the LAN to an ADTRAN TSU unit supporting SNMP. An SNMP management station can monitor and report alarm conditions (traps), while T-Watch PRO, through its extensive configuration and performance monitoring features, can be used to troubleshoot the condition. T-Watch PRO can also be used to manage networks that include ADTRAN's ATLAS 800 integrated access system. A Telnet session can be launched from within T-Watch PRO to manage ATLAS, while preserving all of T-Watch PRO's management features with downstream TSUs.

The TSU (T1 Service Unit), TSU LT, TSU ESP, TSU 100e, TSU 120e, TSU 600e and TDU 120e are intelligent, full-featured T1 DSU/CSUs, designed to interface customer DTE to T1 or fractional T1 services. ATLAS 800 is a full-featured, modular integrated access platform supporting multiple T1 interface along with a wealth of host site features.



**CORPORATE OFFICE**

ADTRAN, Inc.  
901 Explorer Boulevard  
P.O. Box 140000  
Huntsville, AL 35814-4000

800 9ADTRAN  
256 963-8000

fax: 256 963-8699

fax back: 256 963-8200

e-mail: info@adtran.com

web site: www.adtran.com

**REGIONAL OFFICES**

Chicago, IL 800 436-4217

Seattle, WA 800 390-1573

Washington, DC 800 794-9798

**FIELD OFFICES**

Atlanta, GA 800 289-0966

Chicago, IL 800 471-8655

Columbus, OH 888 865-2237

Dallas, TX 800 471-8648

Denver, CO 800 471-8651

Irvine, CA 800 788-5408

Kansas City, KS 800 471-8649

Los Angeles, CA 888 223-7668

Nashville, TN 888 223-7657

New York, NY 800 471-8657

Portland, OR 888 223-7660

Richmond, VA 800 689-9915

San Jose, CA 888 223-7655

**INTERNATIONAL CONTACTS**

Asia Pacific/Australia  
852-2824-8283 (Hong Kong)

Canada

800 232-6811

Caribbean/Latin America

954 746-5355

All other International inquiries

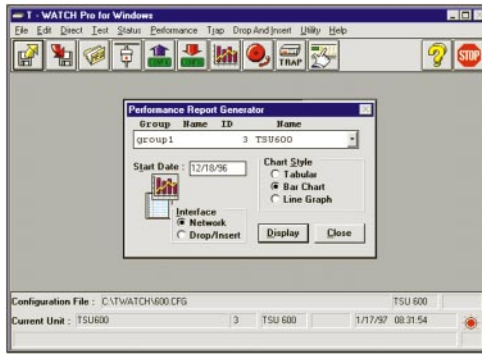
256 963-2500



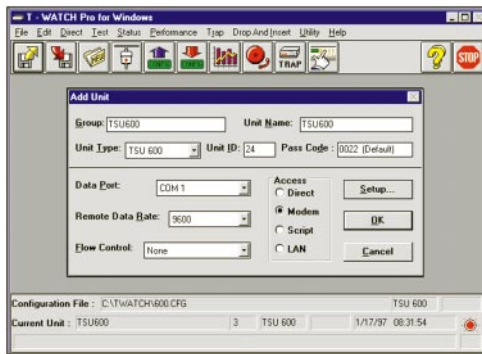
ADTRAN is an ISO 9001 registered company.



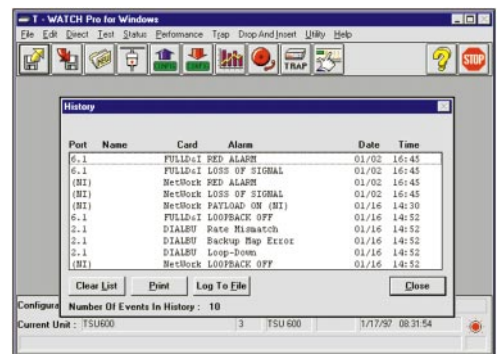
Printed in the U.S.A. on recycled paper.  
61950010L3-8H July 1999  
©1999 ADTRAN, Inc. All rights reserved.



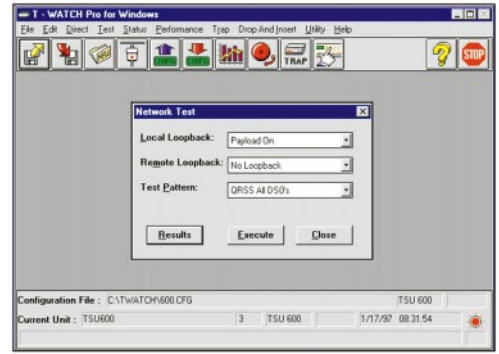
- Logged performance data can be used to generate numerical or graphical performance reports.



- TSU devices are accessed by direct connection, in-band (ESF FDL), or modem connection.



- Unit historical information with Time/Date stamps is readily accessible.



- Local and remote tests are easily invoked with a few mouse clicks.

**Product Specifications**

**SYSTEM REQUIREMENTS**

- PC compatible (486 or better)
- 3.5 floppy drive
- 8 MB RAM minimum
- 6 MB available hard drive
- Available external serial port
- Ethernet card for LAN connections

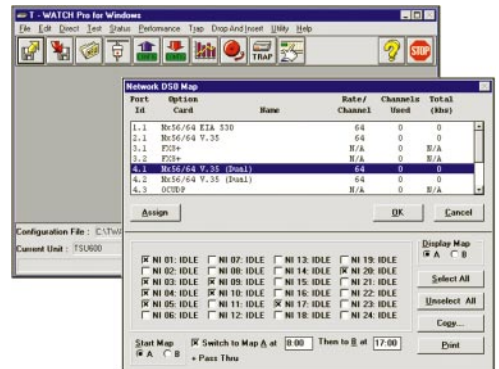
**OPERATION SYSTEMS**

- Windows® 3.1
- Windows 95
- Windows 98
- Windows NT

**Ordering Information**

EQUIPMENT	PART #
T-Watch PRO™	1950010L3
T-Watch PRO Upgrade	1950010L4

Specifications subject to change without notice.



- Assignment of bandwidth to various DTE ports