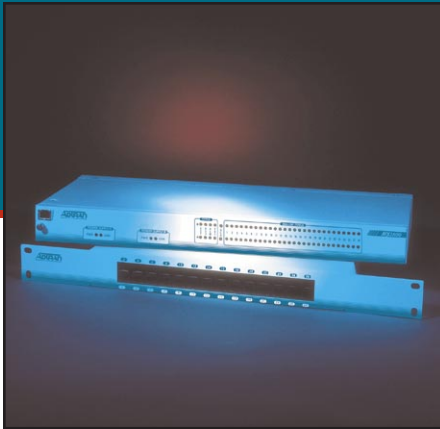


MX2800

M13 MULTIPLEXER



PRODUCT FEATURES

- Affordable DS3 bandwidth consolidation
- Built-in 1:1 redundancy
- Hot swappable controller cards
- SNMP and Telnet management
- Quick, easy installation
- Connectorized backplane
- Capable of backhauling multiple service types (T1/E1)
- Smallest M13 form factor available
- Integrated V.34 modem
- Dial-out "cry for help"
- AC or DC power
- M13 and C-Bit signaling support
- NEBS Level 3 compliant
- Standard 10-year warranty

ADTRAN has applied its industry-leading carrier class expertise to the MX2800 M13 multiplexer, creating a product that meets the most stringent carrier class requirements. The MX2800 offers bandwidth consolidation at a low price and in the smallest footprint available in the industry. Measuring only one rack unit high in 19-inch or 23-inch rackmount configurations, this compact device gives NSPs and enterprise users a powerful tool for consolidating 28 T1 signals or 21 E1 signals into a T3 circuit.

The MX2800 houses two hot-swappable controller cards that are capable of combining independent T1s, E1s, or T1s and E1s, on the same DS3. The two controller cards also provide built-in 1:1 redundancy for the DS1 and DS3 signals as well as redundant DS3 connections. A fully connectorized backplane means no wire wrapping and quick easy installation.

As with all ADTRAN products, the MX2800 offers comprehensive management options. It features a VT100 terminal interface for local configuration. To support SNMP and Telnet management, the MX2800 has an integrated 10BaseT Ethernet port. Also integrated into the unit is a V.34 modem operable in VT100 mode or SLIP/PPP mode for SNMP and Telnet access. The modem is capable of performing a dial-out "cry for help" for units that are located in unmanned facilities.

Carriers looking to maximize their copper investment and consolidate their services in the most efficient manner will find the MX2800 will pay off quickly. For example, a bandwidth reseller who is co-located at an unmanned site and backhauling local and long distance voice service can use the MX2800 to gain T1 access off HiCap SONET rings. The MX2800 is also ideal for Competitive Local Exchange Carriers (CLECs) who are also looking for an efficient means for backhauling local and long distance voice to or from the IXC or LEC. As Internet use continues its rapid expansion, Internet Service Providers are also well served with the MX2800's bandwidth consolidation.

CORPORATE OFFICE

ADTRAN, Inc.
901 Explorer Boulevard
P.O. Box 140000
Huntsville, AL 35814-4000

800 9ADTRAN
256 963-8000
fax: 256 963-8699
fax back: 256 963-8200
e-mail: info@adtran.com
web site: www.adtran.com

REGIONAL OFFICES

Chicago, IL 800 436-4217
Seattle, WA 800 390-1573
Washington, DC 800 794-9798

FIELD OFFICES

Atlanta, GA 800 289-0966
Chicago, IL 800 471-8655
Columbus, OH 888 865-2237
Dallas, TX 800 471-8648
Denver, CO 800 471-8651
Irvine, CA 800 788-5408
Kansas City, KS 800 471-8649
Los Angeles, CA 888 223-7668
Nashville, TN 888 223-7657
New York, NY 800 471-8657
Portland, OR 888 223-7660
Richmond, VA 800 689-9915
San Jose, CA 888 223-7655

INTERNATIONAL CONTACTS

Asia Pacific/Australia
852-2824-8283 (Hong Kong)
Canada
800 232-6811
Caribbean/Latin America
954 746-5355
All other International inquiries
256 963-2500



IS. EN ISO 9001

ADTRAN is an ISO 9001 registered company.



Printed in the U.S.A. on recycled paper.
61200290L1-8A September 1999
©1999 ADTRAN, Inc. All rights reserved.

Product Specifications

DS3 NETWORK INTERFACE

- Channelized DS3
- *Line Build Out*: Short (0 to 50 feet), and Normal (50 to 450 feet)
- *Framing Format*: M13 and C-bit parity
- *Line Rate*: 44.736 Mbps
- *Line Interface*: Dual 75 ohm BNC coax female connectors

DSX-1 INTERFACE(S)

- *Line Build Out*: 0 – 655 feet
- *Line Rate*: 1.544 Mbps
- *Line Code*: AMI or B8ZS
- *Line Framing*: SF (D4) or ESF
- *Line Interface(s)*: (2) 64 pin Amp connectors

CLOCKING

- Network – receive from DS3 network
- Local – internally generated
- External – external BNC input

DIAGNOSTICS

DS3 Network

- ANSI T1.107 compatible loopbacks
- Line, loopbacks

DSX-1 Ports

- Local and network loopbacks

PERFORMANCE MONITORING

Local Network Port Statistics

Current 15 minute, 24 hour (96 15 minute intervals), total for 24 hours and cumulative

- P-bit errored seconds
- P-bit severely errored seconds
- Severely errored framing seconds
- Unavailable seconds
- Line coding violations
- P-bit coding violations
- Line errored seconds
- C-bit coding violations
- C-bit errored seconds
- C-bit severely errored seconds
- F-bit and M-bit errors

DSX Ports

- BPV
- LOS

MANAGEMENT

VT 100 Terminal Interface

- RJ-48, EIA-232 compatible, female DB25 adapter provided

Integrated Modem Interface

- Dial up access for VT 100, SNMP or Telnet
- Dial out "Cry for help"

SNMP/Telnet

- Integrated 10BaseT Ethernet
- MIB II, RFC 1213 & 1407 compliant
- ADTRAN Enterprise MIB for extended monitoring and control/configuration

ALARMS

- External alarm contacts for critical and non-critical alarms
- Normally open and normally closed pinout
- Front panel alarm cutoff switch

AGENCY APPROVALS

- FCC Part 15, Class A, Part 68
- Industry Canada CS03
- UL and CUL
- NEBs Level 3 compliant

ENVIRONMENT

- *Operating Temperature*: 0° to 50°C, (32° to 122°F)
- *Storage Temperature*: -20° to 70°C, (-4° to 158°F)
- *Relative Humidity*: Up to 95%, non-condensing

PHYSICAL

- Dimensions: 1.7" H, 7.86" D, 17" W
- Weight: 5.5 lbs
- Power: 120 VAC or 48 VDC, 30W

PRODUCT INCLUDES

- (2) 6 foot Coax cables, (1) 8-pin to 8-pin modular cable, (1) modular to female DB-25 adapter and user manual, mounting ears for 19" and 23" racks

Ordering Information

EQUIPMENT

PART

MX2800 – AC Redundant	
w/ modem.....	4200290L2
MX2800 – DC Redundant	
w/ modem.....	4200290L4
MX2800 – AC w/ modem	4200290L1
MX2800 – DC w/ modem	4200290L3
RJ DSX-1 Patch Panel	1200291L1
MX2800 – AC Redundant.....	4200290L6
MX2800 – DC Redundant.....	4200290L8
MX2800 – AC	4200290L5
MX2800 – DC	4200290L7



Specifications subject to change without notice.